



EDD

ECONOMIC
DEVELOPMENT
DEPARTMENT

Contact: Bruce Krasnow
Bruce.Krasnow@edd.nm.gov
(505) 795-0119

Gov. Michelle Lujan Grisham
Cabinet Secretary Alicia J. Keyes
Deputy Secretary Jon Clark

FOR IMMEDIATE RELEASE:
June 5, 2023

Franklin Mountain Packaging Announces New Mexico Expansion *Company will add 60 employees at new facility in Santa Teresa*

SANTA TERESA, N.M. - New Mexico Economic Development Department (EDD) Cabinet Secretary Alicia J. Keyes announced today that Franklin Mountain Packaging, a manufacturer specializing in producing high quality corrugated micro-flute sheets and digital print and die cutting, has signed a lease on a new 150,000-square-foot production center and warehouse facility being constructed in New Mexico's Borderplex.

The new facility is adjacent to Franklin Mountain Packaging's (FMP) current 140,000-square-foot building at 401 Avenida Ascencion, Santa Teresa, N.M. The company expects to add 60 employees in the next three years, bringing its total employee count at its New Mexico facilities to 155. The State of New Mexico is investing \$500,000 from its Local Economic Development Act Job Creation Fund (LEDA) to support the expansion.

FMP's expansion announcement is the third this summer for businesses in the Santa Teresa Borderplex region.

"Franklin Mountain Packaging is one of several companies that have recently announced plans to grow jobs and invest capital into New Mexico's Borderplex region," Secretary Keyes said. "These businesses are taking advantage of the logistical and cost advantages of doing business along New Mexico's international border as they invest in more robust and resilient transportation networks and supply chains."

FMP's Quantum Corrugator is one of only two of its kind in North America and one of fourteen in the world. Quantum not only has advanced corrugated sheet-making capabilities but uses 30% less energy and square footage than traditional corrugators. Producing micro-flutes means creating lighter weight sheets and boxes with the same strength, while using less fiber in each corrugated sheet or box. This translates into lower packaging and freight costs for FMP's customers.

FMP also has a high speed, single pass digital printer on site that allows for printing high-quality graphics on corrugated sheets without the need for costly print plates. While having some die-cutting capabilities at its current location, the expansion will allow FMP to expand its die-cutting and finishing capabilities.

The Santa Teresa location provides FMP with easy access to El Paso, Phoenix, the greater Southwest U.S., and Northern Mexico, along I-10, I-25, and I-40, where it can easily service its customers. "Our prime location affords us easy access to rail and ground transportation across the U.S. and Mexico," according to the company's website.

“The State of New Mexico’s focus on the border region for the past few years and their infrastructure investments are making the area an attractive spot for industrial development,” said Paul Foster, CEO of Franklin Mountain Investments. “The joint efforts on the Santa Teresa border crossing between the State of New Mexico and the State of Chihuahua are also moving the needle. Together, these investments and efforts will continue to foster economic growth in the area.”

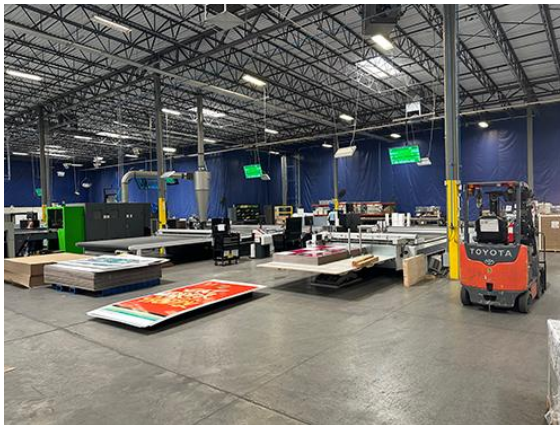
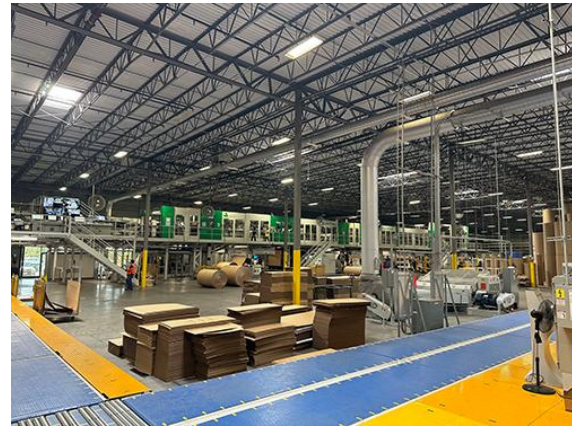
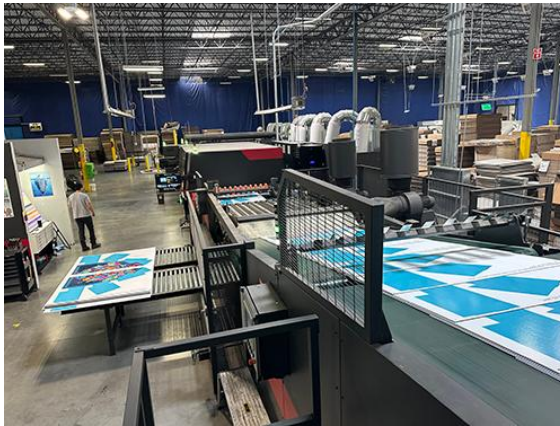
The company is assisted in its expansion by the Mesilla Valley Economic Development Alliance (MVEDA). MVEDA has awarded Franklin Mountain \$150,000 in economic assistance from the NMBorderplex Closing Incentive, a local incentive administered by MVEDA and the Community Foundation of Southern New Mexico.

“We are excited to see Franklin Mountain Packaging’s continued growth in Santa Teresa,” MVEDA President and CEO Davin Lopez said. “Investments like these are why Santa Teresa is fast becoming recognized as the premier location in the southwest United States for company expansions.”

The Santa Teresa Port of Entry is a primary crossing between the United States and Mexico, and it is the first land port without a bridge structure from the east. Because of this, it serves a critical function for the El Paso and Ciudad Juarez industrial regions, as the only oversized and overweight port, not limited by space or weight. The port is also clearing a growing number of regular commercial vehicles and a larger segment of local and non-local private commuters.

Santa Teresa continues to set records in commercial traffic and that number is expected to increase due to consistent heavy congestion in El Paso ports. In the last two years, the port has doubled the number of commercial vehicles processed per hour and hit a new record in 2022 by processing more than 160,000 trucks.

###



Photos courtesy of Franklin Mountain Packaging. [Higher resolutions images available upon request.](#)

EDD’s mission is to improve the lives of New Mexico families by increasing economic opportunities and providing a place for businesses to thrive. EDD’s programs contribute directly to this mission by training our workforce, providing infrastructure that supports business growth, and helping every

New Mexico Economic Development Department
EDD.NewMexico.gov

